



Woodstock Road, London, W4 1EG

£1,695,000

WHITMAN & CO.

SALES · LETTINGS · COMMERCIAL

- Five-bedroom family house
- 70' Private garden
- 35' Through reception room
- Prestigious residential Road
- Fantastic transport links
- Host of original features

Tenure - Freehold
Local Authority - Hounslow
Council Tax - Band G

THE PROPERTY

A well presented five bedroom period family house offering an excellent balance of living and entertaining space with a 70' garden in this highly prestigious residential road. This superb house comprises five bedrooms, two bathrooms, a large entrance hall, 35' through reception room, a fully fitted kitchen, a breakfast/dining room, host of original features and a private 70' landscaped garden. Ideally situated in the Bedford Park area offering close proximity to Turnham Green tube station, numerous bus routes and the extensive shops, bars and restaurants on Chiswick High Road.

Woodstock Road, W4

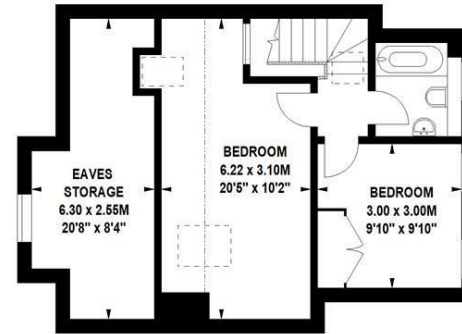
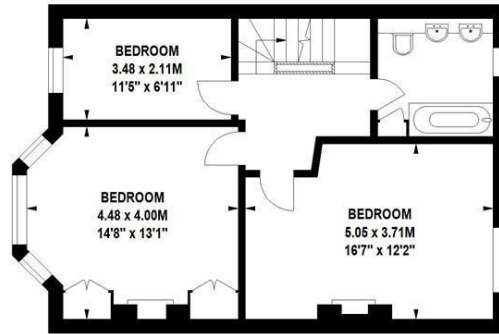
Approximate gross internal area

174.09 sq m / 1874 sq ft

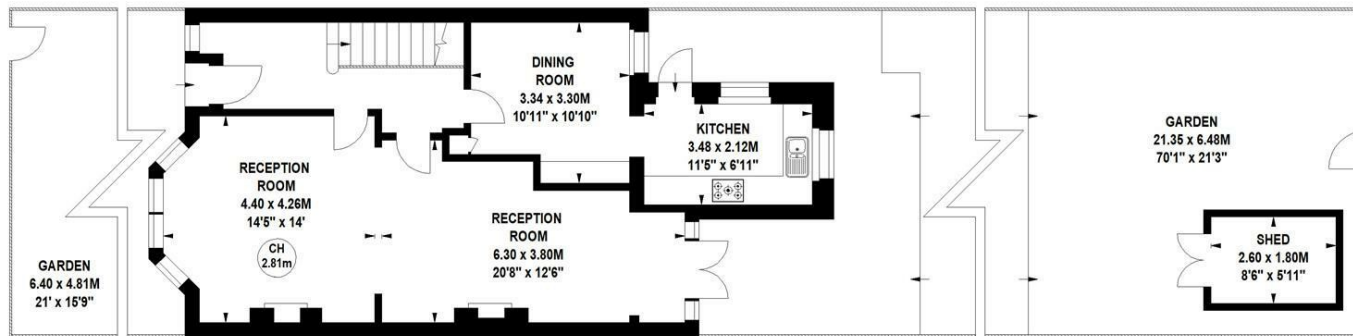
(including Eaves Storage)

Eaves Storage

13.28 sq m / 143 sq ft



Key :
CH - Ceiling Height



Not to scale, for guidance only and must not be relied upon as a statement of fact.
All measurements and areas are approximate only

SITUATION



5-7 Turnham Green Terrace, Chiswick, London, W4 1RG

Tel 020 8747 8800

E-mail sales@whitmanandco.com

Website www.whitmanandco.com